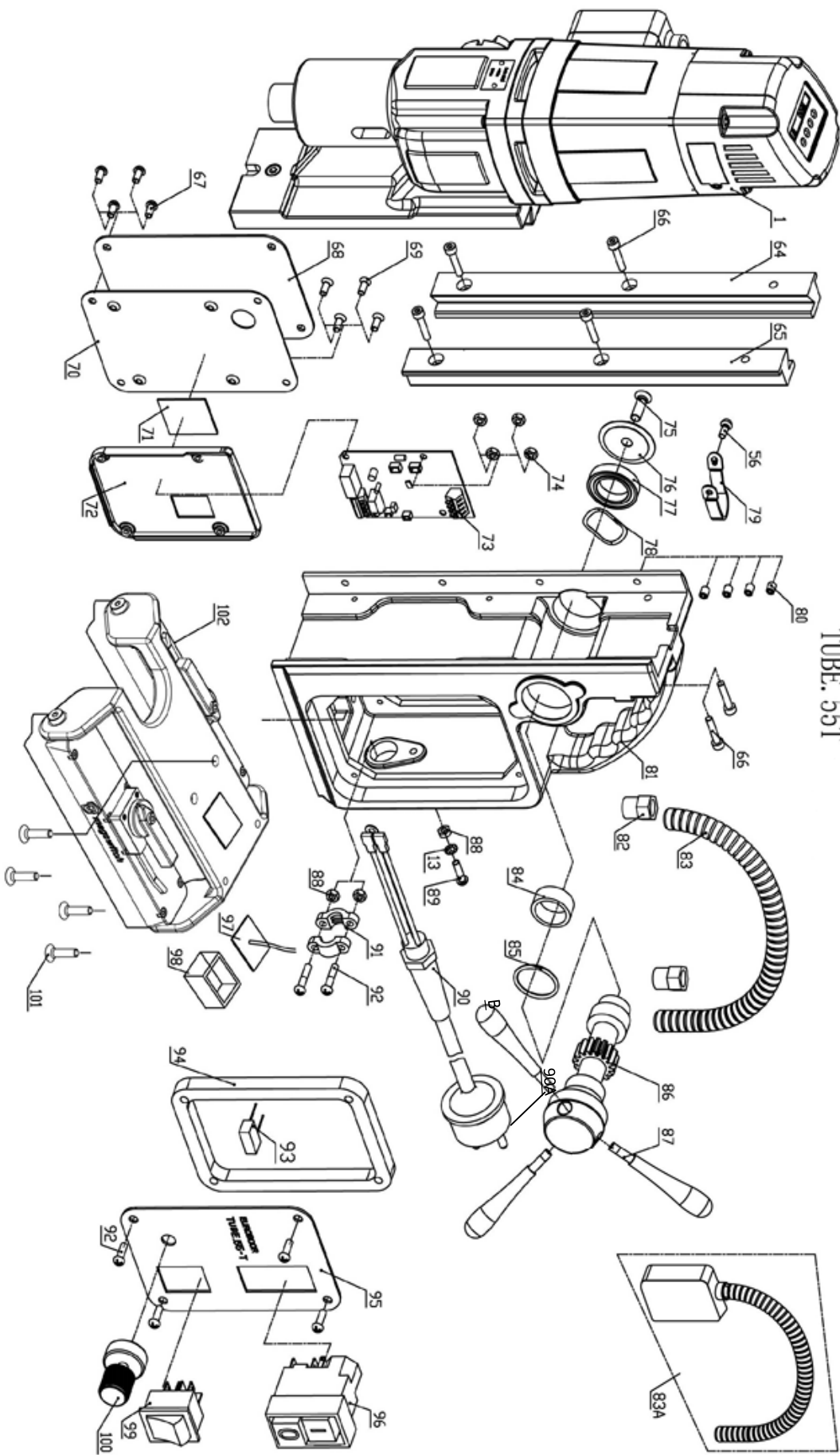


SPAREPART LIST EUROBOOR TUBE.55T			
No.	Part number	Description	Qty used
1	055TM.1001	Motor 220V complete (incl. gearbox)	1
	055TM.1001A	Motor 110V complete (incl. gearbox)	1
2	100.0306	Screw	8
3	050.0059	Protective cover 53 x 35	1
4	050.1013	LED screen	1
5	050.0060	Screw M3 x 5	6
6	050.0133	End plate	2
7	050.0130	End cover	1
8	050T.0332	Screw for speed control unit	2
9	055T.0010T	Top PCB 230V	1
	055T.0010TA	Top PCB 110V	
10	050.0147	Carbon brush set - 230V	1
	050.0148	Carbon brush set - 110V	
11-16	050.0371	Carbon brush holder	2
17	050.0586	Cable housing	1
18	050T.0002-4	Control unit A 220V	1
	050T.0003-4	Control unit A 110V	1
19	050.0131	Housing	1
19A	CS055T.0341	Cable	1
20	050.0587	Screw	4
21	050T.0278	Field 220V	1
	050T.0278A	Field 110V	1
22	020.0328	Screw M4 x 70	2
23	050.0261	Baffle	1
24	050T.0346	Rubber ring	1
25	050T.0180	Armature speed disk	1
26	032.0126	Bearing	1
27	050T.0183	Armature 220V	1
	050T.0183A	Armature 110V	1
28	032.0166	Circlip	1
29	032.0171	Bearing	1
30	050.0064	Oil bearing	1
31	050.0236/Y	Inner gear plate	1
32	040.0161	Bearing	3
33	050.0065	Metal ring	1
34	050.0176	Circlip	1
35	050.0071	O-ring	1
36	050.0207	Gasket	1
37	050.0252	Gear set (assembly)	1
38	050.0171	Gear 34/40Z	1
39	050.0231	Gear	1
40	100.4496	Key 5x5x28	1
41	020.0156	Screw	1
42	050.0074	Rack	1
43	050.0076	Circlip	1
44	050.0463	Gear 1 x 45T	1
45	050.0462	Washer	1
46	030.0009	Bearing	1
47	050.0066	Oil bearing	1

48	050.0078	Ring	1
49-51	050.1016	Gear switch assembly	1
52	020.0329	Screw	1
53	050.0082	Screw holder	1
54	050.1005A	Clutch shaft set	1
55	032.0211	Pin	1
56	KSP.MS	Screw	3
57	020.0289	Coolant hanger	1
58	050.1015	Gear box 230V	1
	050.1019	Gear box 110V	
59	050.0068	Bearing	1
60	020.0146	Screw	1
61	020.0111	Washer	1
62	050.0077	Key	1
63	050.0461	Spindle drive shaft	1
64-65	020.0086/Z	Rail set Alu (L+R) Z-profile	1
66	020.0063	Screw	6
67	020.0101	Screw	4
68	055.0002	Rear panel plate 230V	1
	055.0002A	Rear panel plate 110V	
69-74	055T.1019	Speed control unit assembly 220V	1
	055T.1019A	Speed control unit assembly 110V	
75	020.0081	Screw	1
76	050.0030	End cover	1
77	050.0063	Bearing	1
78	040.0023	Washer	1
79	020.0298	Motor cable clamp	1
80	020.0231	Screw	4
81	020.0056/Z-TUBE	Frame	1
82	020.0041	Coupling nut for motor cable	2
83	020.0046	Motor cable tube	1
83A	CS055T.1020	Motor cable complete (incl. 17 (1), 82 (2), 83 (1))	1
84	032.0127	Metal bearing	1
85	030.0027	Washer	1
86	020.0061/XB	Capstan hub	1
87	020.0315	Arm for capstan	3
88-89	020.0182	Grounding screw/washer/nut	2

90A	020.0036	Main cable complete 220-240V	1
	020.0036/AU	Main cable Australia	
	020.0036/UK	Main cable UK 220v	
	020.0036/UK 110-16A	Main cable UK 110v 16A	
	020.0036/USA	Main cable USA	
90B	020.0031	Coupling nut PG11 (main cable)	1
91-92	032.1020-CK	Cable clamp	1
93	050.1030-TM	Capacitance	1
94	032T.0009	Spacer	1
95	PP.F-TUBE.55-T	Front panel plate	1
96	030E.0091/Y2	On/off switch 220V	1
	030E.0092/Y2	On/off switch 110V	
97-98	055.1041	Gyro-scope PCB set	1
99	100.0152	Left/Right switch	1
100	032T.0057	Potentiometer	1
101	055T.0006	Screw	4
102	055T.1013	Magnet base ECO-TUBE.55-T complete	1
		<i>Consisting of the following parts:</i>	
103	3001289	Magnetic Base Frame	
104	3001395	Magnet Handle Kit	
105	180165	M5x8 Button Head	
106	1801027	Shoulder Bolt, Mounting	
107	1801028	Bushing, Brass	
108	180158	Bearing	
109	600273	Ratchet cover RED	
110	80001056	Magnet array complete (incl. 104 & 105)	
200	CAS.TUBE55T	Case metal for TUBE.55-T	1
201	KSP.Q2	Coolant tank Quick Connect 2015	1
202	IBO.10.200	Cutting oil IBO.10 0.2LTR	1
203	SAF.300	Protective gloves	1
204	SAF.400	Safety chain (1 mtr) with lock	1
205	SAF.100	Safety goggles	1
206	SAF.200	Ear plugs	1
207	KSP.P	Arm for capstan	1
208	IMB.US2.5	Allen key 2.5 mm	1
209	IMB.US3	Allen key 3.0 mm	1
210	IMB.US4	Allen key 4.0 mm	1
211	IMB.US5	Allen key 5.0 mm	1
212	drift3	Drift MT3	1
213	IMC.30/19-N-TUBE	Spindle set for TUBE.55-T	1

TUBE. 55T



TUBE. 55T

