

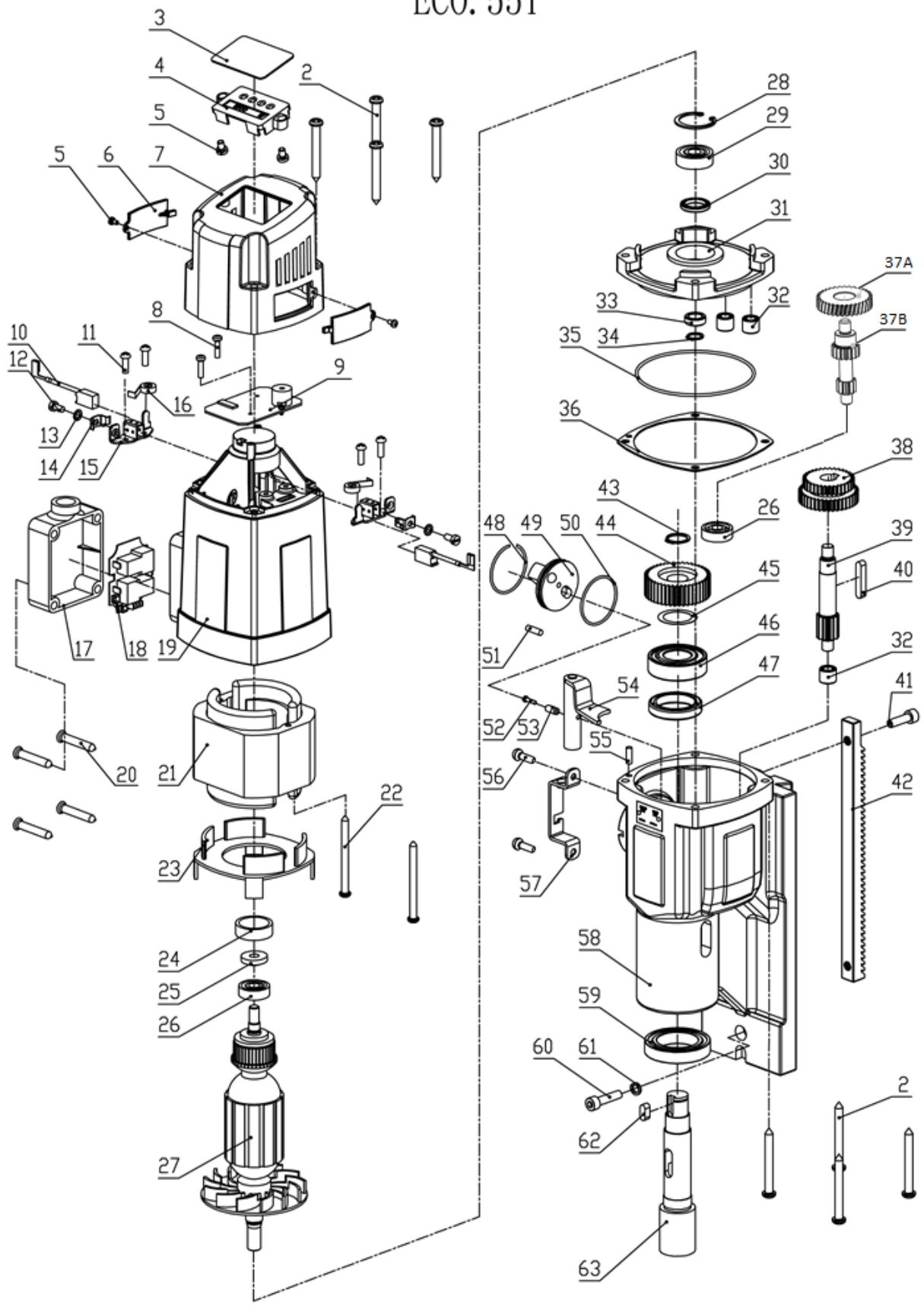
SPARE PART LIST EUROBOOR ECO.55T

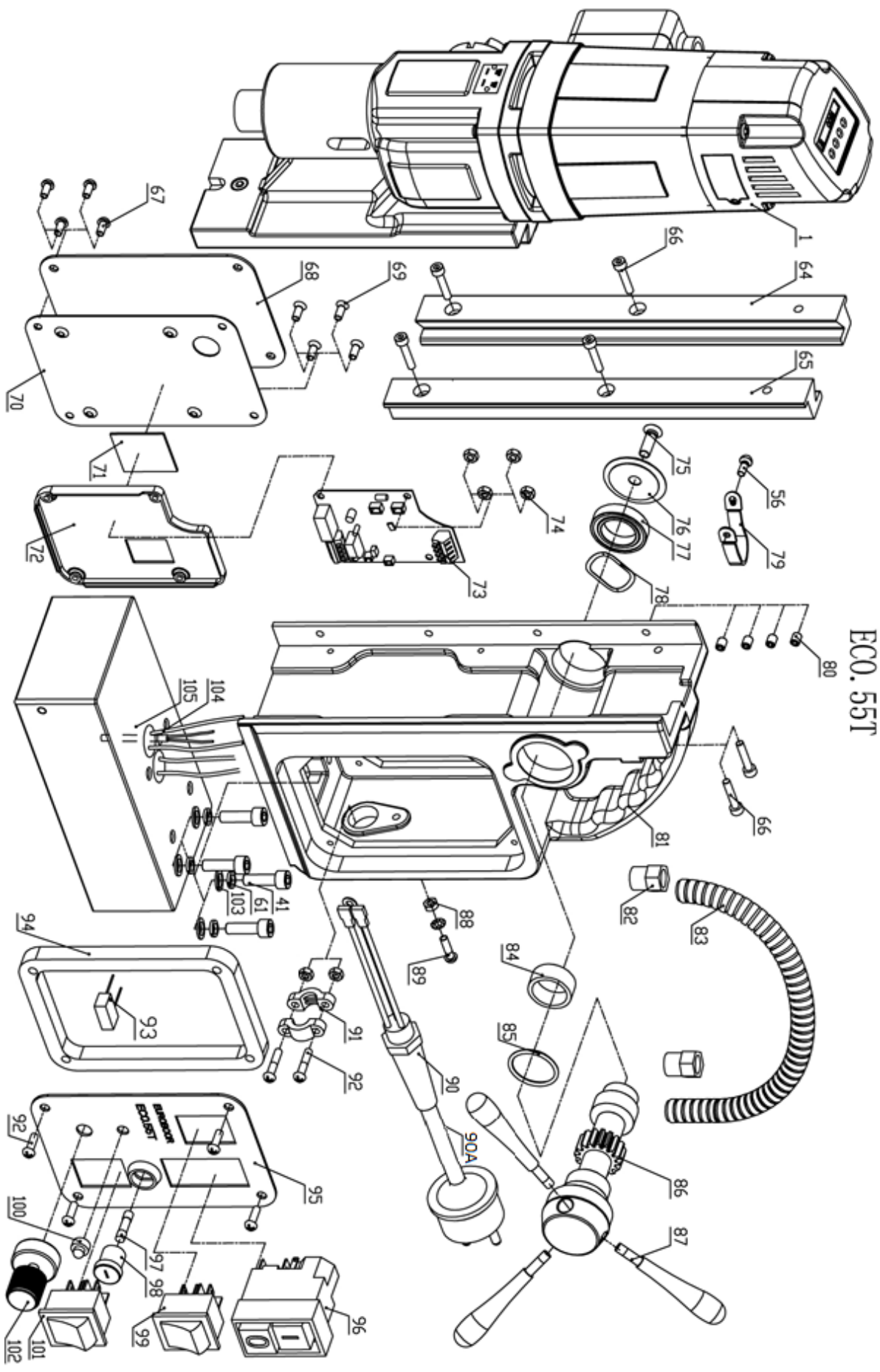
No.	Part number.	Description.	Qty used.
1	055T.1001	Motor unit 220-240 V	1
	055T.1001A	Motor unit 110-120 V	
2	050.0106	Screw 5x45	8
3	050.0059	Protective cover 53 x 35	1
4	050.1013	Led screen	1
5	050.0060	Screw M3 x 5	4
6	050.0133	End plate	2
7	050.0130	End cover	1
8	050T.0332	Screw for speed control unit	2
9	055T.0010	ECO.55-T Control unit 2 - 230V	1
	055T.0010A	ECO.55-T Control unit 2 - 110V	
10	050.0069	Carbon brush set - 230V	2
	050.0070	Carbon brush set - 110V	
11-16	050.0371	Carbon brush holder	2
17	050.0586	Cable housing	1
18	050T.0002	Control Unit 1 - 230V (2015)	1
	050T.0003	Control Unit 1 - 110V (2015)	
19	050.0131	Housing	1
20	050.0587	Screw pkvz 4,8 x 35	4
21	050T.0278	Field 230V	1
	050T.0278A	Field 110V	
22	020.0328	Screw M4 x 70	2
23	050.0261	Baffle	1
24	050T.0346	Rubber ring	1
25	050T.0180	Armature speed disk	1
26	032.0126	Bearing 8x22x7 608	1
27	050T.0183	Armature 230V	1
	050T.0183A	Armature 110V	
28	032.0166	Circlip 472/28/1.2	1
29	032.0171	Bearing 6001 12 x 28 x 8	1
30	050.0064	Oil bearing 15 x 21 x 3	1
31	050.0236/Y	Inner gear plate	1
32	040.0161	Needle bearing HK 0810	3
33	050.0065	Metal ring	1
34	050.0176	Circlip 471/11	1

35	050.0071	O-ring 82 x 1.8	1
36	050.0207	Gasket middle	1
37A	050.0251	First gear	1
37B	050.0246	Gear shaft	1
38	050.0171	Gear 34/40Z	1
39	050.0231	Axle	1
40	100.4496	Key 5x5x28	1
41	020.0156	Screw SSM6x20	5
42	050.0074	Rack	1
43	050.0076	Circlip diam. 20	1
44	050.0463	Gear 1 x 45T	1
45	050.0462	Washer 20.5 x 28 x 0.2	1
46	030.0009	Bearing 6004DDU	1
47	050.0066	Oil bearing 28 x 38 x 7	1
48	050.0078	Ring 41.5 x 36.5 x 1.5	1
49-51	050.1016	Gear switch assembly	1
52	020.0329	Screw M4 x 16	1
53	050.0082	Screw holder	1
54	050.1005A	Clutch shaft	
55	032.0211	Casing pin 4 x 12	1
56	020.0063	Screw M5x20	2
57	020.0289	Coolant hanger	1
58	050.1015	Gear box 230V	1
	050.1019	Gear box 110V	
59	050.0068	Bearing 61906DDU	1
60	020.0146	Screw M6 x 25	1
61	020.0111	Washer M6 DIN7980	5
62	050.0077	Key 6 x 6 x 12	1
63	050.0461	Spindle drive shaft 34x146	1
64-65	020.0086/Z	Rail set Alu (L+R) Z-profile	1
66	020.0063	Screw M5x20	6
67	020.0101	Panel Screw BKVZM4x8	4
68	055.0002	Rear panel plate 230V	1
	055.0002A	Rear panel plate 110V	
69-74	055T.1018	ECO.55-T Speed control unit - 220V	1
	055T.1018A	ECO.55-T Speed control unit - 110V	

75	020.0081	End Screw BKVZM6x20	1
76	020.0077	End plate	1
77	050.0063	Bearing	1
78	030E.5051	Spring washer	1
79	020.0298	Motor cable clamp	1
80	020.0516	Screw SS M5 x 10	4
81	020.0056/Z	Frame	1
82	020.0041	Coupling nut (motor cable) PG9	2
83	020.0046	Motor cable complete inc. 020.0041/H	1
84	032.0127	Metal bearing	1
85	030.0027	Washer	1
86	020.0061/XB	Capstan hub assembly black	1
87	020.0315	Arm for capstan	3
89	020.0182	Grounding Screw/washer/Nut	1
90	020.0031	Coupling nut (Main cable) PG11	1
90A	020.0036	Main cable complete 220-240V	
	020.0036/AU	Main cable Australia	
	020.0036/UK	Main cable UK 220v	
	020.0036/UK 110-16A	Main cable UK 110v 16A	
	020.0036/USA	Main cable USA	
91-92	020.0037	Cable clamp	1
93	020.0257	Capacitance	1
94	032T.0009	Spacer	1
95	055T.0049	Front panel plate	1
96	030E.0091/Y	Motor switch (5-pin) 220-240V	1
	030E.0092/Y	Motor switch (5-pin) 110-120V	
97	020.0017	Fuse 5x20 F2A	1
98	020.0016	Fuse holder	1
99	100.0152	R/L Switch (push) 1800 W	1
100	020.0206	LED indicator set	1
101	020.0011	Magnet Switch	1
102	050T.1009	Potentiometer (turn)Knob	1
103	020.0111	Washer M6 DIN7980	4
104	020.0201/2	Sensor	1
105	050.1003	Magnet	1

ECO. 55T





ECO.55T

ECO.55T

