

Spareparts ECO.40/2

Nr.	Articlenr.	Description	
1	040.0101	Motorunit 220-140v	1
	040.0102	Motorunit 110-120v	
2	032.0106	Screw BK4,8x55	4
3	032.0111	End Cover	1
4	032.0136	Screw for spring	2
5	032.0141	Spring	2
6	032.0142	Screw M4x15	2
8	032.0146	Carbon Brush set 220v	1
	032.0147	Carbon Brush set 110v	
11	032.0116	Screw 4,2x13	2
12	032.0131	Adaptor ring cap	1
13	032.0121	Adaptor ring	1
14	032.0241	Housing	1
15	040.0276	Field 220-240v	1
	040.0277	Field 110-120v	
16	032.0156	Screw 4x55	2
17	032.0161	Baffle	1
18	032.0126	Bearing 608	1
19	040.0266	Armature 220-240v	1
	040.0267	Armature 110-120v	
20	032.0166	Circlip 472/28	1
21	032.0171	Bearing 6001	1
22	040.0146	Inner Gear Plate	1
23	032.0237	Gasket Small	1
24	032.0221	Bearing 608	1
25	040.0251	First Gear	1
26	040.0246	Gear Shaft	1
27	040.0161	Needle Bearing HK0810	2
28	040.0171	Gear 34/28	1
29	050.0231	Axle	1
30	100.4496	Key 5x5x28	1
31	040.0176	Spindle Gear	1
32	040.0181	Adaptor ring	1
33	032.0171	Bearing 6001	1
34	040.0291	Clutch Shaft	1
35	032.0211	Casing Pin	1
40	040.0286	Gear Switch	1
42	040.0241	Gear Casing	1
43	032.0106	Screw 5x50	4
44	040.0196	Bearing 6202	1
45	040.0191	Spindle Drive Shaft	1
46	020.0156	Screw SSM6x20	10
47	020.0111	Washer	10
48	040.0041	Top Fixing Plate 110mm	1
49	KSP.MS	Screw for Tank Holder	2

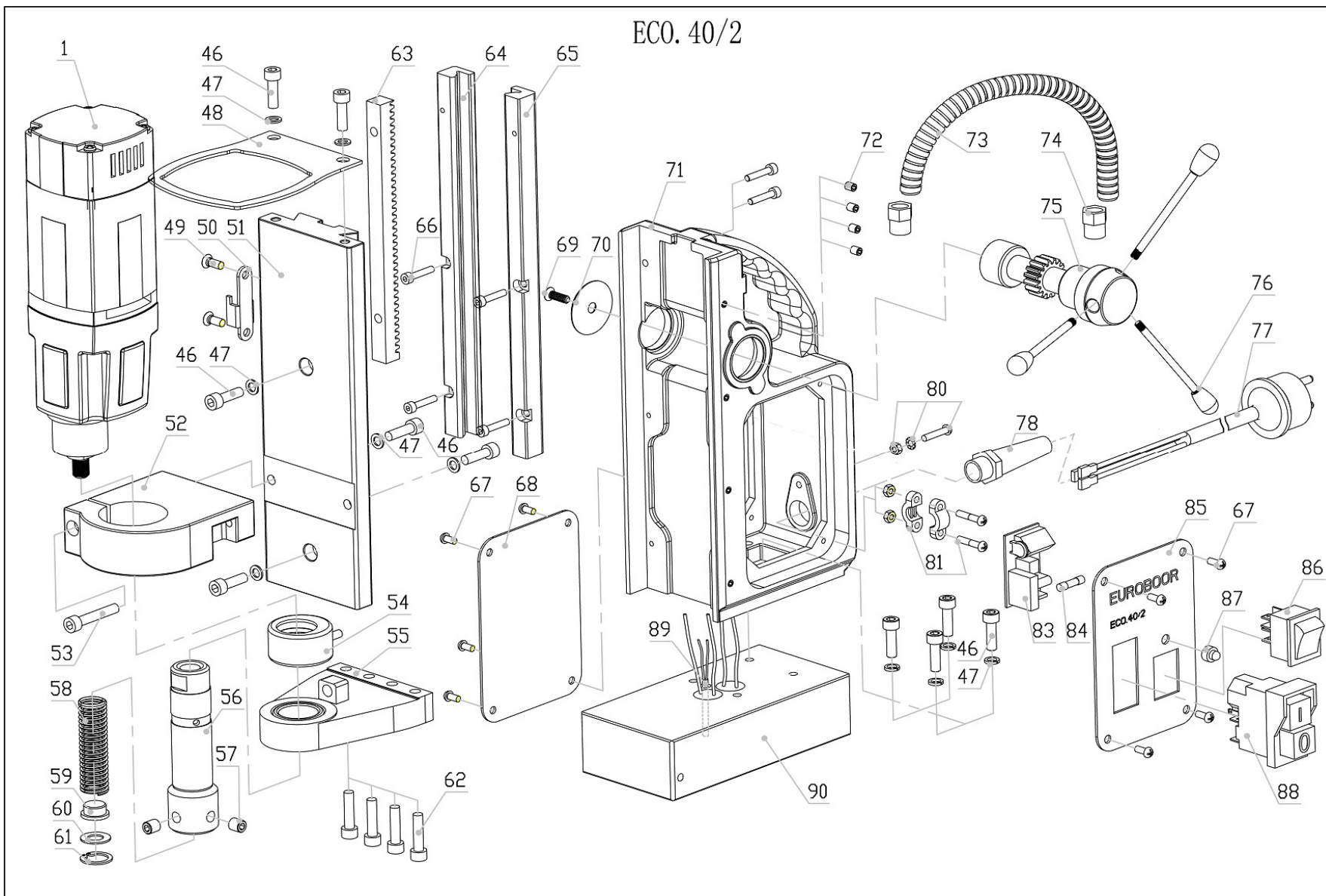
50	KSP.M/2	Tank Holder	1
51	040.0011	Slide	1
52	032.0026	Motorholder	1
53	032.0027	Screw SSM6x35	1
54	020.0145	Coolant Ring	1
55	020.0142	Steady	1
56	020.0116	Spindle complete	1
57	020.0136	Fixing Screw spindle	2
58	*	Spring	
59	*	Button	
60	*	Washer	
61	*	Circlip	
*	020.0121	Springset for spindle	1
62	020.0146	Screw SSM6x25	4
63	032.0016	Rack	1
64+65	020.0086/X	Rail Set Alu (L+R)	1
66	020.0086/S	Screw SSM4x20	6
67	020.0101	Panel Screw	8
68	PP.RSEU-220	Rear Panel Plate 220	1
	PP.RSEU-110	Rear Panel Plate 110	
69	020.0081	End Screw	1
70	020.0077	End Plate	1
71	020.0056/X	Frame	1
72	020.0056/S	Setting Screw M5x6	4
73	020.0046	Motorcable complete	1
74	020.0041	Coupling Nut PG9	2
75	020.0061/X	Capstan Hub Assembly	1
76	020.0066	Arm for capstan	3
77	020.0036	Main Cable EURO	1
78	020.0031	Coupling Nut PG11	1
80	020.0182	Gronding set	1
81	020.0037	Cable Clamp	1
83	020.0001/2	Control Unit YSW	1
	020.0002/2	Control Unit YSW 110v	
84	020.0017	Fuse F2A	1
85	PP.40EU/4	Front Panel Plate	1
86	020.0011	Magnet Switch	1
87	020.0206	LED Indicator set	1
88	030E.0091/Y	Motorswitch 220v	1
	030E.0092/Y	Motorswitch 110v	
89	020.0201	Sensor	1
90	020.0052	Electromagnet (with sensor)	1

DATE GENERATED : 22-11-2013

LAST UPDATED : 29-01-2015

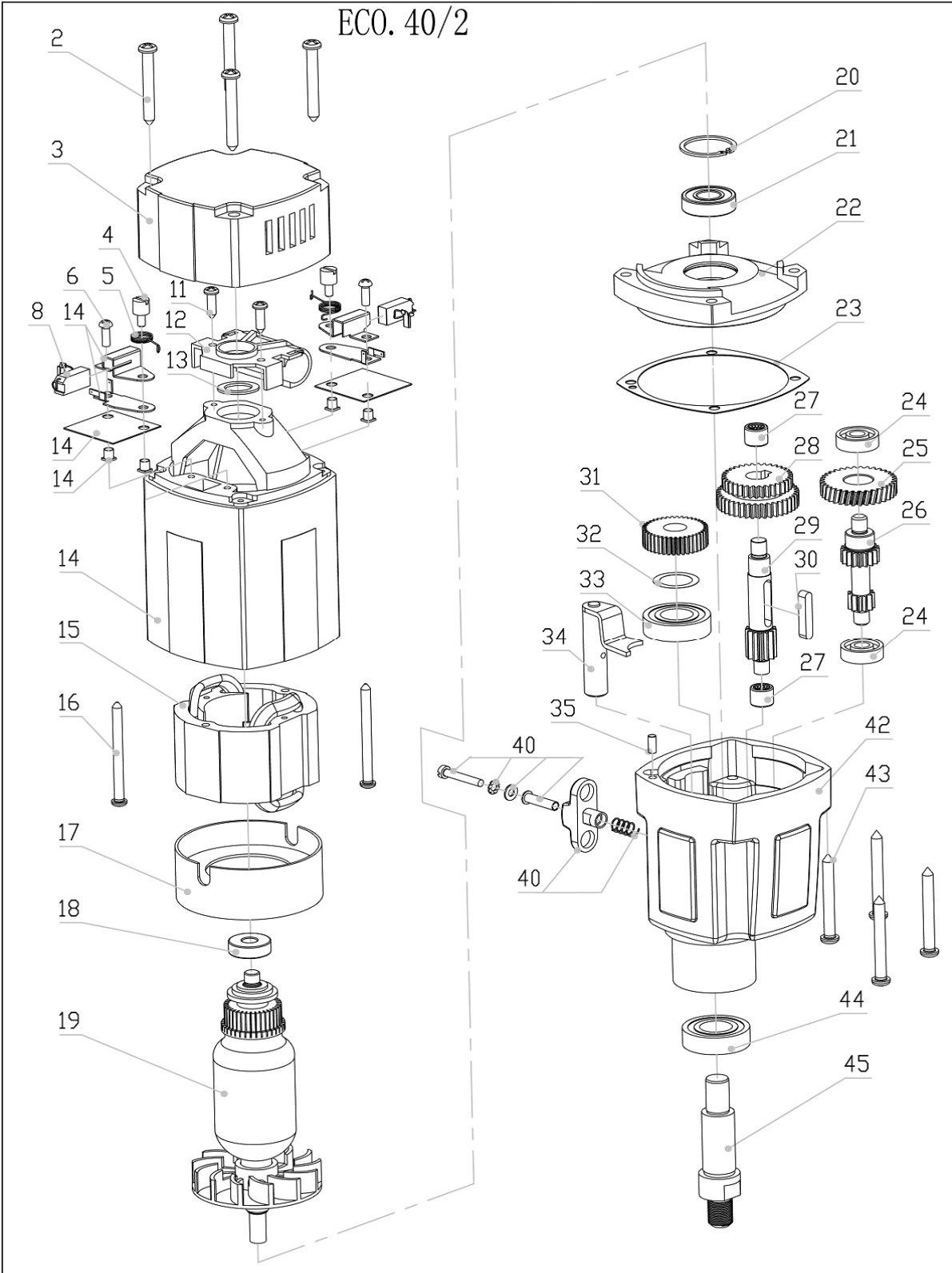
EXPLODED VIEW FRAME

ECO. 40/2



EXPLODED VIEW MOTOR

ECO. 40/2



WIRING DIAGRAM

ELECTRICAL WIRING DIAGRAM

