

Drawing nr.	Part nr.	Description
--------------------	-----------------	--------------------

Drill Stand (A)

1	A52.0001	Safety Guard
2	A52.0006	Pinion Head Cap
3	A52.0011	Pinion Bush
4	A52.0016	Arm
5	A52.0021	Ball Knob
6	A52.0026	Pinion shaft
7	A52.0031	Rack
8	A52.0041	Cover / Stop Plate
9	A52.0046	M6x10 CapScrew
10	A52.0051	M4x10 Cap Screw
11	A52.0056	M5x10 Grub Screw
13	A52.0061	Body
14	A52.0066	Magnet
15	A52.0071	Motor Housing
17	A52.0076	Valve Assembly Complete
18	A52.0081	Inlet Fitting
19	A52.0086	Switch Valve
20	A52.0091	Lever Switch
25	A52.0096	Snap Connector
27	A52.0101	Clevice
28	A52.0106	Clevice Shaft
29	A52.0111	Snap Connector - "L" - 12mm
30	A52.0116	Snap Connector - "Straight" - 12mm
31	A52.0121	Brass Strip Outer
31a	A52.0126	Steel Strip
32	A52.0131	Brass Strip Inner
33	A52.0136	M6x25 Grub Screw
34	A52.0141	M6 Wing Nut
35	A52.0146	Hose Alu / Brass
36	A52.0151	M8x16 Cap Screw
37	A52.0156	M5x10 Grub Screw
38	A52.0161	12x150 Nylon Tube
39	A52.0166	5x150 Nylon Tube
	A52.0171	Carrying Case

Valve assembly (C)

01-01	A52.0177	Valve Assembly Body
01-02	A52.0181	Valve
01-03	A52.0186	Shaft
01-04	A52.0191	Cap
01-05	A52.0196	Piston
01-06	A52.0201	Valve Spool
01-07	A52.0206	O-Ring
01-08	A52.0211	O-Ring
01-09	A52.0216	O-Ring
01-10	A52.0221	O-Ring
01-11	A52.0226	O-Ring
01-12	A52.0231	Ball 5mm
01-13	A52.0236	Screw
01-14	A52.0241	Screw
01-15	A52.0246	Pin

01-16	A52.0251	Spring
01-17	A52.0256	Spring
01-18	A52.0261	Cap
01-19	A52.0266	Circlip
01-20	A52.0271	Cartridge
01-21	A52.0276	Spring
01-22	A52.0281	Pin
01-23	A52.0286	Screw
01-24	A52.0291	O-Ring

Motor unit (B)

01	A52.0296	motor complete
07	A52.0301	motor assembly complete
08	A52.0306	Gear 12 Teeth
09	A52.0311	Gear 58 Teeth
10	A52.0316	Circlip
11	A52.0321	Bearing
12	A52.0326	Bearing
13	A52.0331	Coupling
14	A52.0336	Circlip
15	A52.0341	Bearing
16	A52.0346	Oil seal
17	A52.0351	Gearcase Assembly complete
18	A52.0356	Gearbox Assembly complete
20	A52.0361	Spring washer
21	A52.0366	Locating Grub screw
07-10	A52.0371	Arbor

Detail #07 (D)

07	A52.0301	Motor assembly
07-01	A52.0701	Housing rear
07-02	A52.0702	Bearing
07-03	A52.0703	Bearing
07-04	A52.0704	Housing front
07-05	A52.0705	Vane
07-06	A52.0706	Cylinder
07-07	A52.0707	Pin
07-08	A52.0708	Spacer
07-09	A52.0709	Rotor

Detail #17 (D)

17	A52.0351	Gearcase assembly complete
17-01	A52.1701	Gearcase
17-02	A52.1702	Bearing
17-03	A52.1703	Oil seal

Detail #18 (D)

18	A52.0356	Gearbox assembly complete
18-01	A52.1801	Bearing
18-02	A52.1802	Planet cage
18-03	A52.1803	Planet pin
18-04	A52.1804	Gear-planet
18-05	A52.1805	Bush

Motorunit 2006- (E)

13	A52.2013	Bottom Steady
14	A52.2014	Motor
15	A52.2015	Arbor guide bush
16	A52.2016	Oil seal 38x25x5
17	A52.2017	Oil seal 35x25x5
44	A52.2044	Screw
49	A52.2049	Screw
51	A52.2051	Push fitting
69	A52.2069	Long reach arbor

Motor assembly 2006- (F)

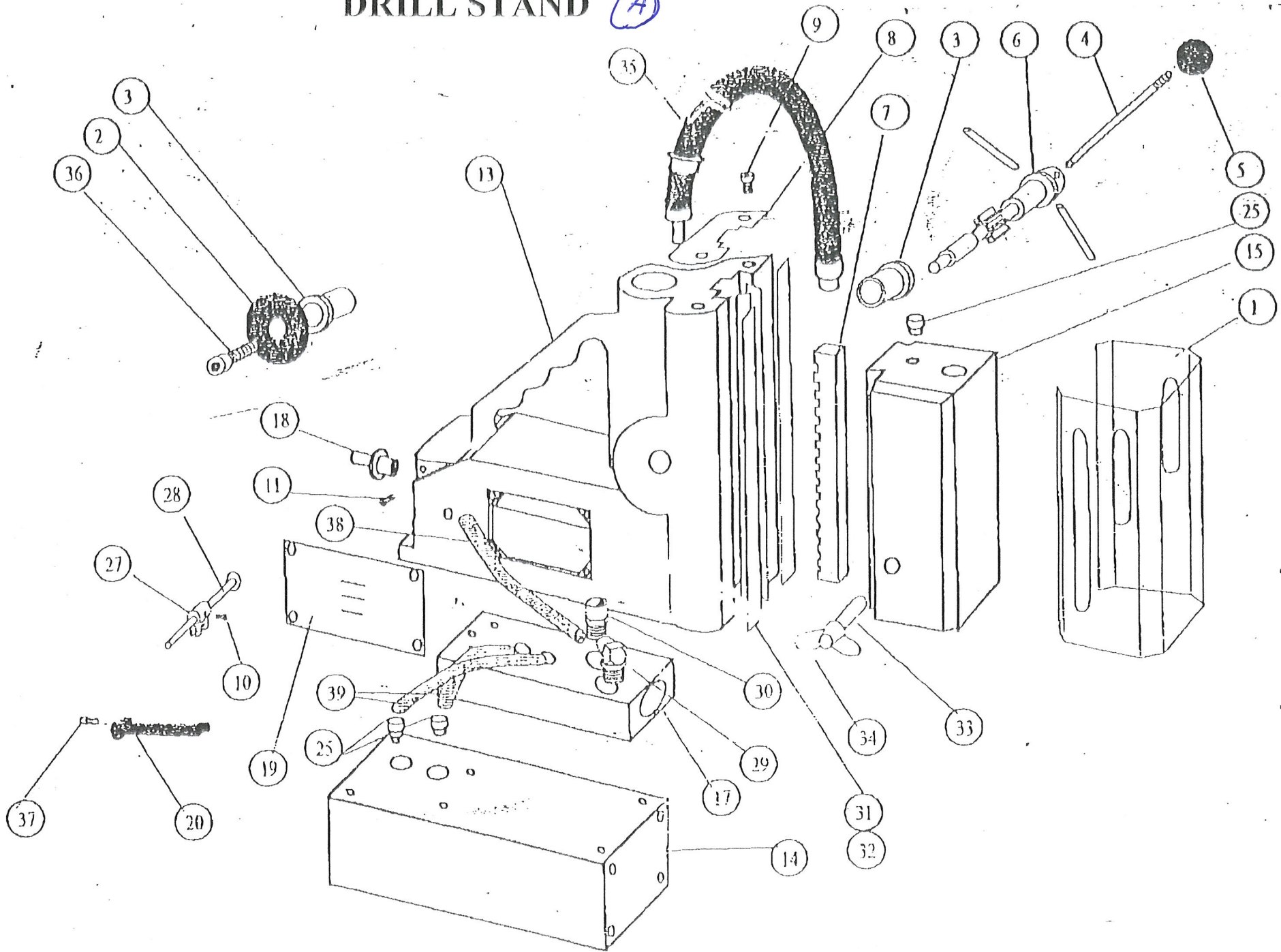
1	A52.2101	Spring Washer
2	A52.2102	Bearing
3	A52.2103	Bearing
4	A52.2104	Strainer
5	A52.2105	Reducer
6	A52.2106	Nut
7	A52.2107	Roll Pin
8	A52.2108	Lower center plate
9	A52.2109	Upper center plate
10	A52.2110	Gear Case
11	A52.2111	Clamp Screw
12	A52.2112	Rotor
13	A52.2113	Cylinder bushing
14	A52.2114	O-Ring
15	A52.2115	Rotor housing
16	A52.2116	Drive Shaft
17	A52.2117	Muffler
18	A52.2118	Spindle
19	A52.2119	Name plate
20	A52.2120	Flange
21	A52.2121	Idler Gear
22	A52.2122	Idler Gear
23	A52.2123	Needle roller
24	A52.2124	Bearing
25	A52.2125	Bearing
26	A52.2126	Spacer
27	A52.2127	Rotor Blade
28	A52.2128	Idler gear pin
29	A52.2129	Sun Wheel
30	A52.2130	Internal circlip
31	A52.2131	Bearing carrier
32	A52.2132	Spacer
33	A52.2133	O-Ring
34	A52.2134	Roll Pin

Frame 2006- (G)

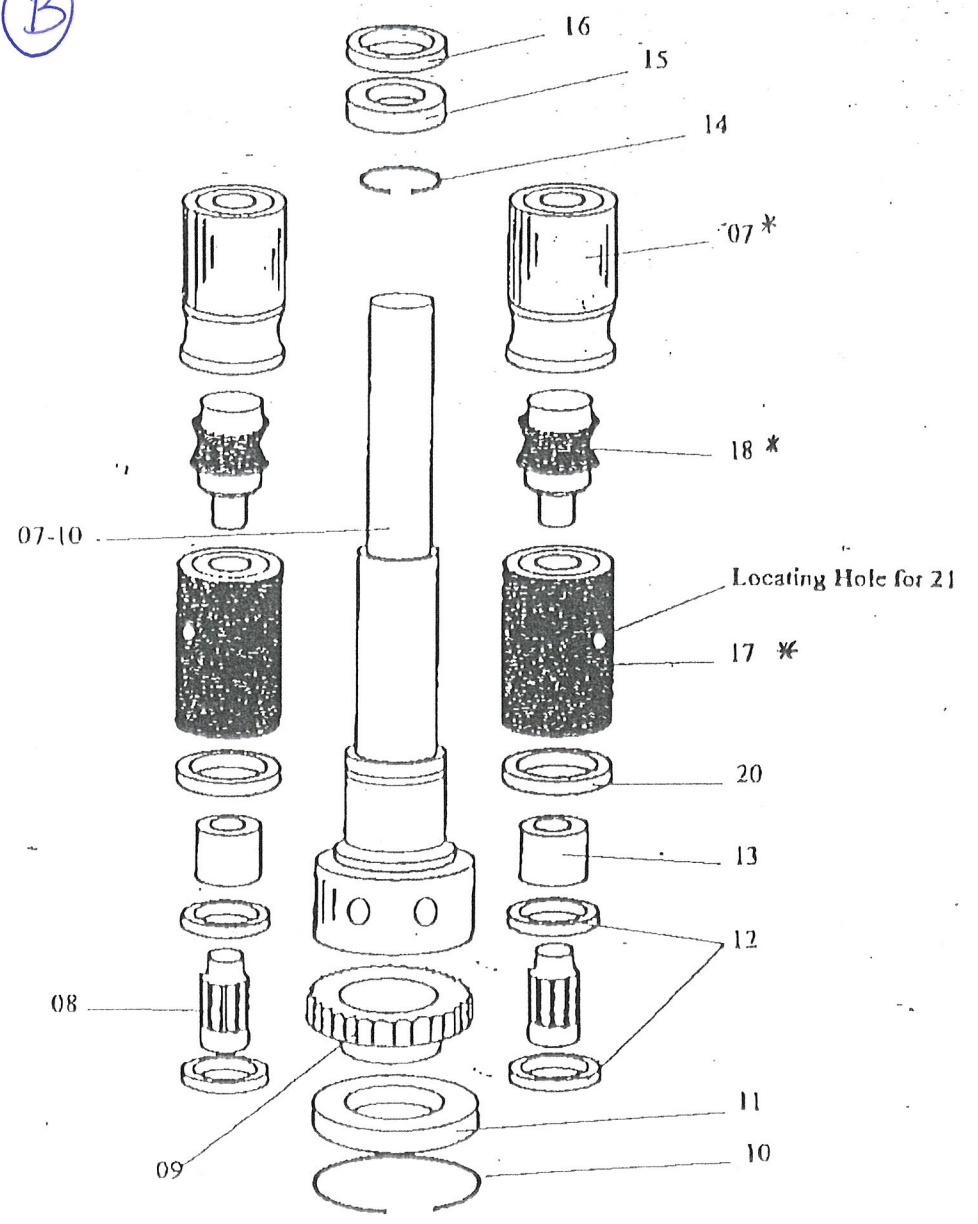
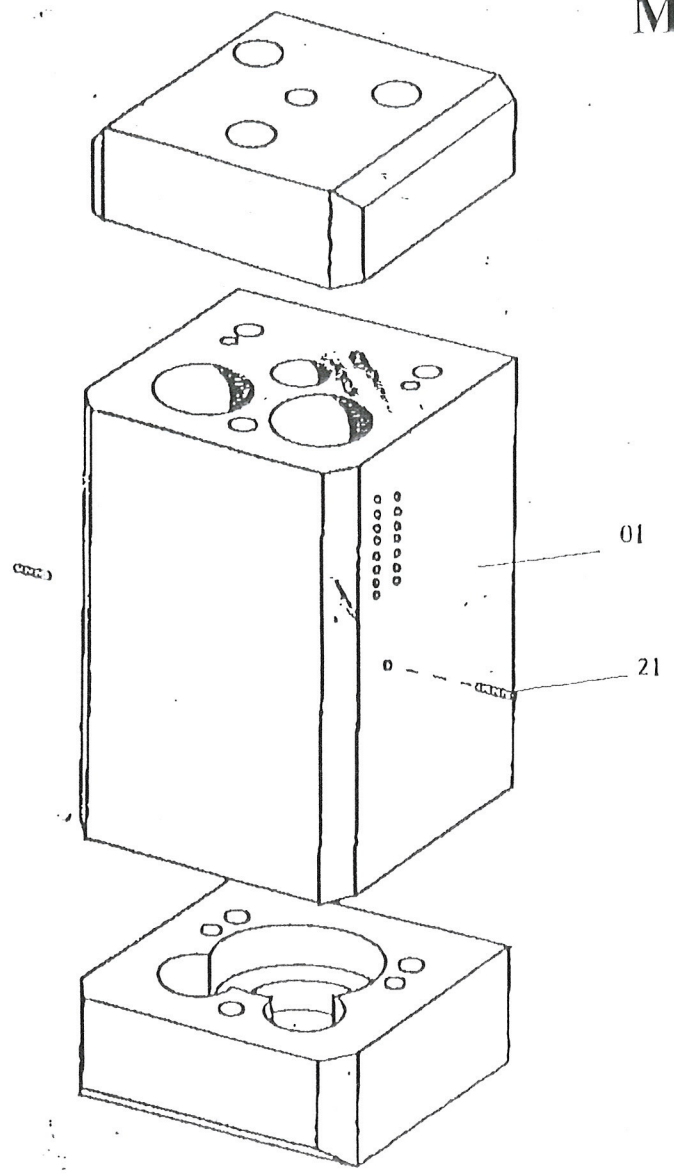
5	A52.2005	Magnet shell
6	A52.2006	Frame
12	A52.2012	Slide
13	A52.2013	Bottom Steady
14	A52.2014	Motor
15	A52.2015	Arbor guide bush
16	A52.2016	Oil seal 38x25x5
17	A52.2017	Oil seal 35x25x5
18	A52.2018	Rack
19	A52.2019	Brass rail
20	A52.2020	Magnet Pinion support
21	A52.2021	Magnet Pinion shaft
22	A52.2022	Magnet Pinion shaft bush
23	A52.2023	Front plate
24	A52.2024	Magnet lever
25	A52.2025	Magnet lever lock cap
26	A52.2026	Kob
27	A52.2027	Screw
28	A52.2028	Handle extension lever
29	A52.2029	Capscrew
34	A52.2034	Hose coupling
35	A52.2035	Seal tube
36	A52.2036	Pinion shaft
37	A52.2037	Pinion shaft bush
38	A52.2038	Handle shaft
39	A52.2039	Top plate
40	A52.2040	Nut
41	A52.2041	Setting screw
42	A52.2042	Pinion end cap
43	A52.2043	Pressing strip
44	A52.2044	Screw
45	A52.2045	Screw
46	A52.2046	Screw
47	A52.2047	Screw
48	A52.2048	Screw
49	A52.2049	Screw
50	A52.2050	Air Hose
51	A52.2051	Push fitting
52	A52.2052	Pin
53	A52.2053	Air valve block
54	A52.2054	Air valve ball
55	A52.2055	Air valve washer
56	A52.2056	Air valve ball retaining screw
57	A52.2057	Air valve washer
58	A52.2058	Air valve plug
59	A52.2059	Air valve lever rod
60	A52.2060	O-ring
61	A52.2061	Air valve lever retainer
62	A52.2062	Screw
63	A52.2063	Dowel
64	A52.2064	Air valve lever
65	A52.2065	Revolving grip

66	A52.2066	Push fit fitting
67	A52.2067	Screw
68	A52.2068	Tank replacement bar
69	A52.2069	Long reach arbor
70	A52.2070	Magnet assembly 1
71	A52.2071	Magnet assembly 2

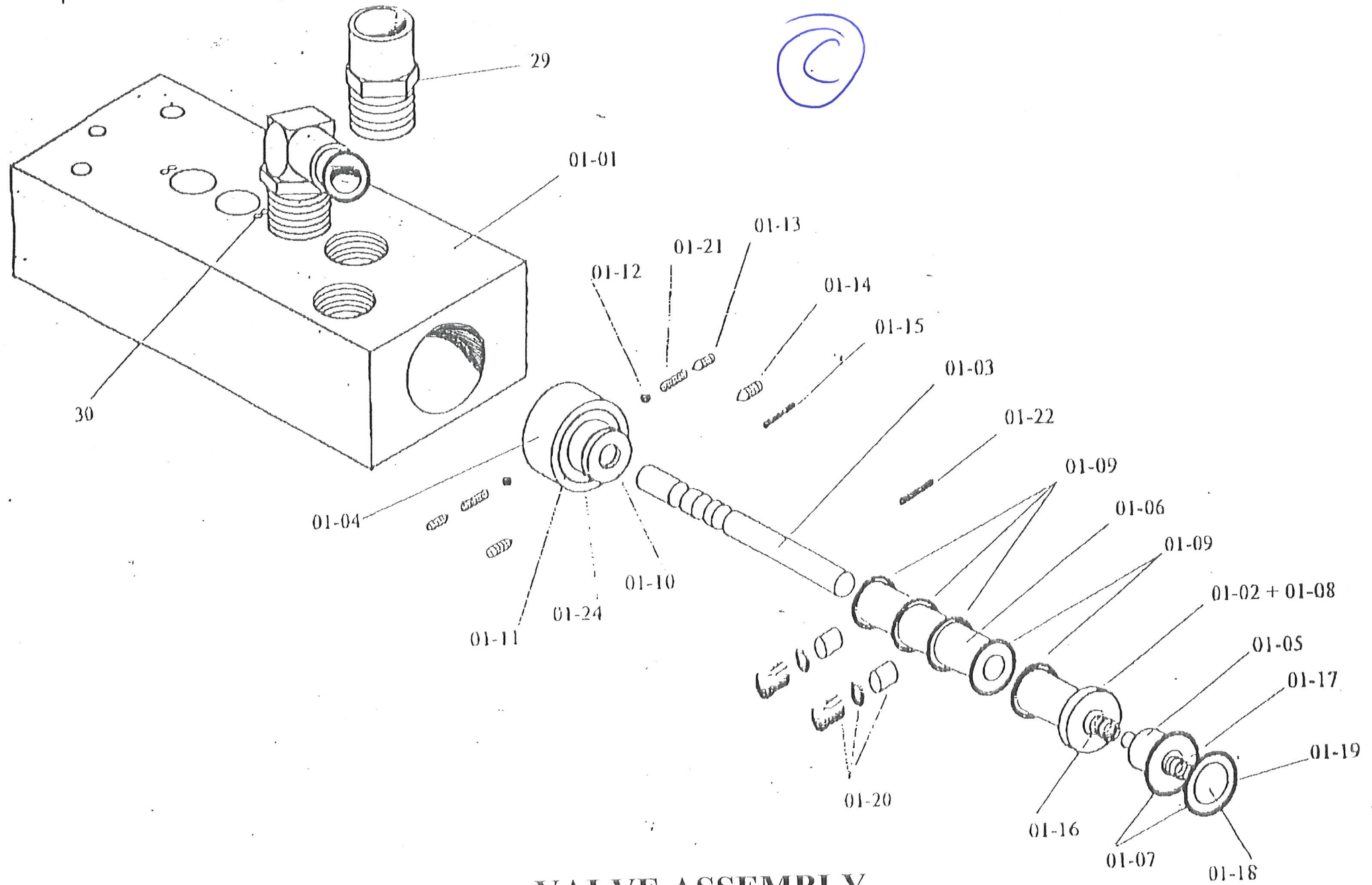
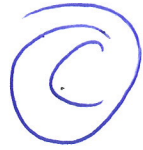
DRILL STAND A



MOTOR UNIT (B)



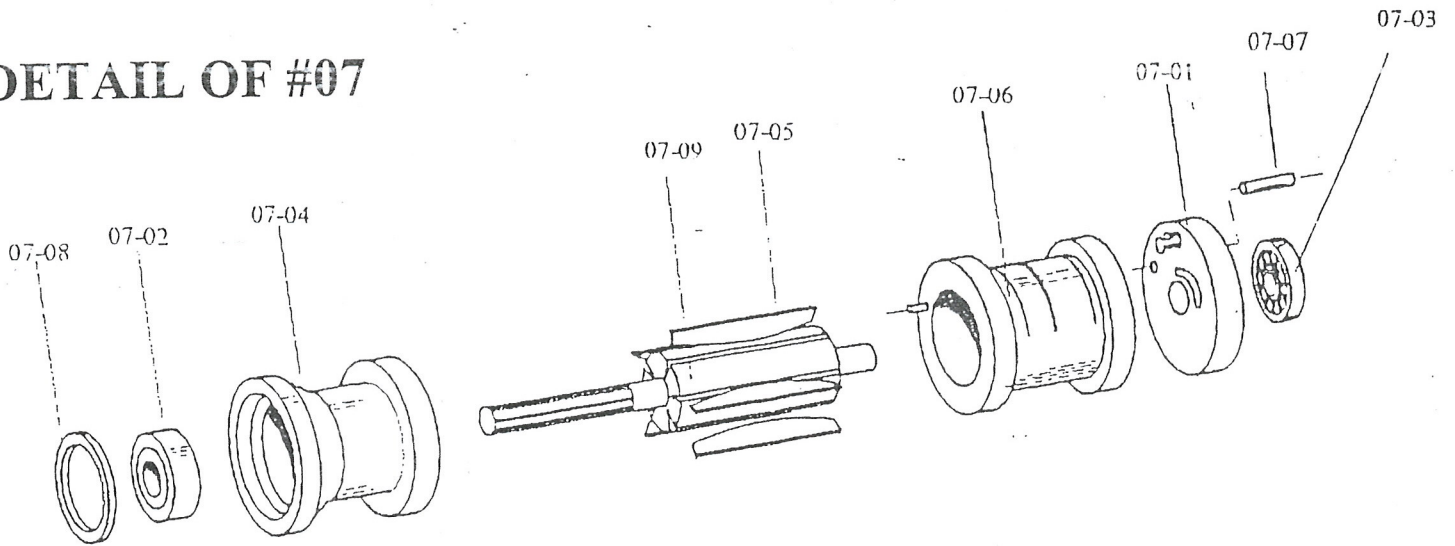
* SEE DETAIL



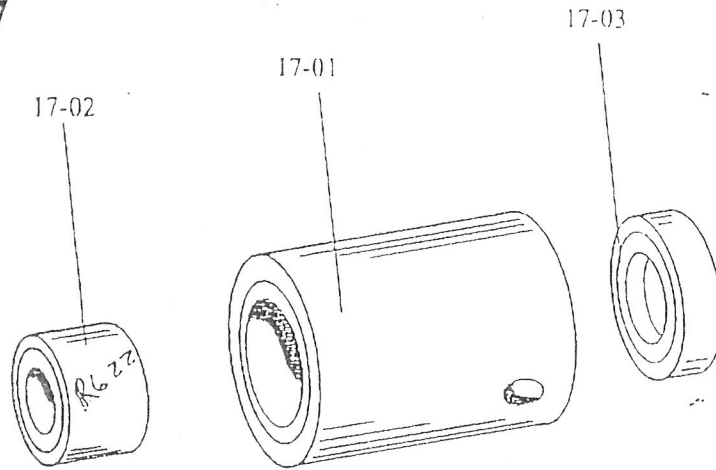
VALVE ASSEMBLY



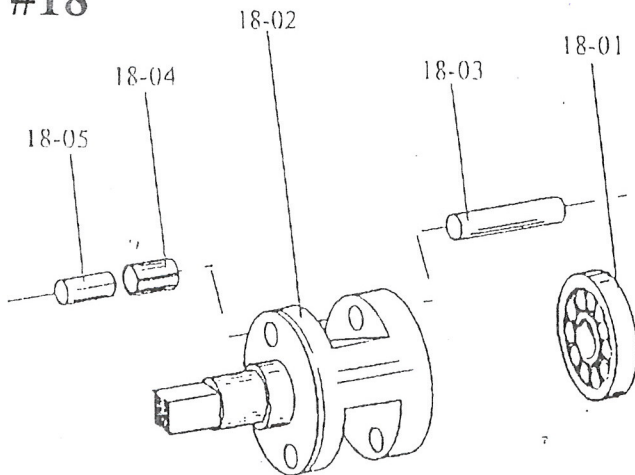
DETAIL OF #07



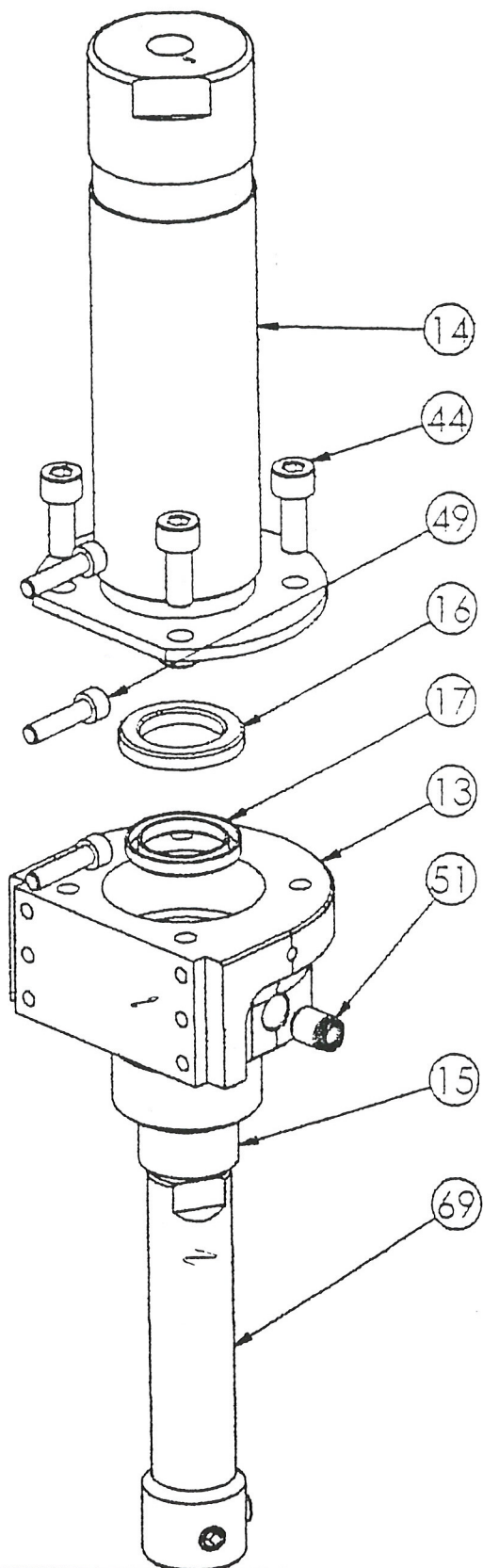
DETAIL OF #17



DETAIL OF #18



(E)



F

