




Beveling machine

B60S

Key specifications

Weight	Motor	Depth
 24,1 kg	 1800 W	 24 mm max
53.1 lbs	16.4 A	15/16" max



Stainless steel guide plate assembly (available from March)
art.no. B60.1020S

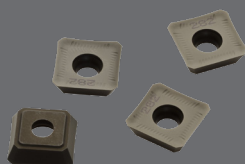


Technical data

	Metric	Imperial
Spindle speed	1675 - 2850 min ⁻¹	1675 - 2850 rpm
Max. bevel depth	24 mm (45° angle)	15/16" (45° angle)
Bevel angle	0 - 60°	0 - 60°
Pipe diameter	150 - 300 mm	5 15/16" - 11 13/16"
Length	415 mm	16 5/16"
Width	375 mm	14 3/4"
Height	268 mm	10 9/16"
Weight	24,1 kg	53.1 lbs
Motor power	1800 W	16.4 A
Power supply	110 - 120 V AC / 50-60 Hz 220 - 240 V AC / 50-60 Hz	

Additional benefits:

- Powerful high efficiency motor
- Clear indicator for angle-setting, up to 60°
- Suitable for both plate and pipe material up to 300 mm
- Variable speed, including material type indicator
- Extremely suitable for stainless steel
- Wide and soft handles
- Overload protection



Cutting plates
10 pieces installed
(art.no. LKS.15)



Clear markings



24 mm bevel depth (at 45°)



Variable speed